

Formed 1939,



Incorporated 1943

Kentucky Naturalist News

Official Newsletter of the Kentucky Society of Natural History

Volume 67, Number 1, Spring 2009

Website: <http://www.ksnh.org>

2008-2010 Officers

President: Joe Settles (joe.settles@ekpc.coop)
Vice Pres.: Zeb Weese (zeb.weese@ky.gov)
Sec.: Margarette Perkins (mjoyperk@aol.com)
Treasurer: Cindy Payne (cpayne_ksnh@bellsouth.net)
Editor: Barry Nichols (news@ksnh.org)
Past Pres.: Pat Meyer (kybirder@bellsouth.net)
webmaster: Dave Luzader (webmaster@ksnh.org)

2008-2010 Coordinators

Astronomy: Ken Alderson (president@louisville-astro.org)
Environmental Ed.: Larry Hilton (sbear@ksnh.org)
Field Trips: James Kiser (james.kiser@stantec.com)
Grants: Wally Roberts (waldonroberts@bellsouth.net)
Geology: Berl Meyer (geology@ksnh.org)
Herpetology: John MacGregor (john.macgregor@ky.gov)
Historian: Joe Battcher (via mail)
Hospitality: Cherry Baker (cherry@ksnh.org)
Invertebrate: Paul Florence (paul.florence@kctcs.edu)
Mammalogy: Mark Gumbert (mwgumbert@copperheadconsulting.com)
Programs: Pat Meyer (kybirder@bellsouth.net)
Publicity: Mary Jane Glauber (cherokee@ksnh.org)
Naturalist of the Year: Wally Roberts/Joe Settles
Photography: Chris Bidwell (mabteacher1@yahoo.com)
Youth Activities: Jeff Foster (jfoster@sccc.edu)

Board Members at Large

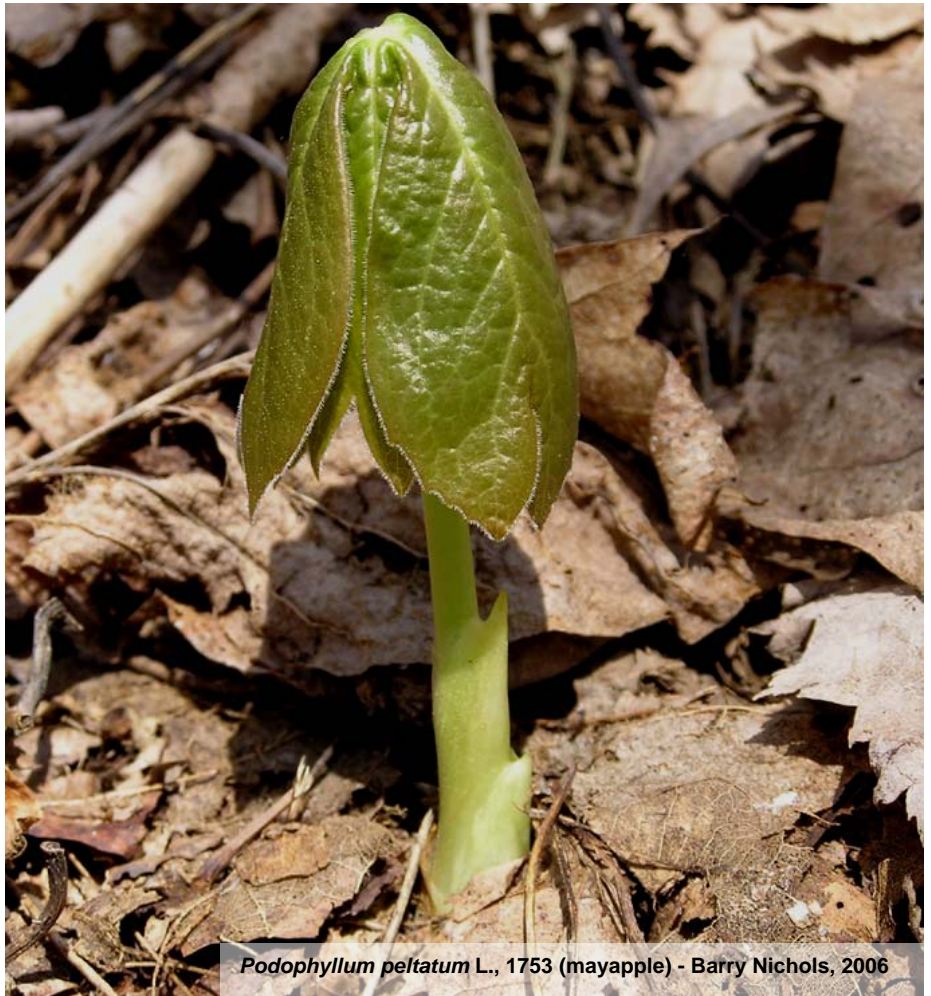
Charlie Baker (macganzer@bellsouth.net)
Pete Glauber (cherokee@ksnh.org)
Herb Zimmerman (via mail)

Affiliated Chapters

Arches of the Cumberland Chapter (Slade) meets informally, call President Dell Sasser for details, 606-666-7521 x73559 or (606) 663-9379.

Falls of the Ohio Chapter (Louisville) meets every 3rd Thursday of each month except Jan, Jul, Aug, & Dec at 7:00 PM at the Louisville Nature Center, 3745 Illinois Ave, Louisville, 40213. Call President Chris Bidwell at (502) 458-1328.

Wilderness Trail Chapter (Pineville) meets the first Thursday of each month, March through December, at 7:00 p.m., generally at Pine Mountain State Resort Park, 1050 State Park Road Pineville, KY 40977-0610 (800-325-1712).



Podophyllum peltatum L., 1753 (mayapple) - Barry Nichols, 2006

EDITOR'S NOTES

This issue contains the 2009 Spring Meeting agenda for Pine Mountain Settlement School. It also contains not one, but TWO opportunities to assist in important survey work, namely NestWatch and the Nightjar Survey Network. That's not all, Falls of the Ohio Chapter President and regular Kentucky Naturalist News contributor Chris Bidwell was awarded the William Clay Award by the Falls of the Ohio Chapter! Wally Roberts announces the Fall 2009 meeting at Reelfoot Lake. Wally also writes of Smoky Mountain Memories, and we announce the winners of last issue's Newsletter Photo Contest and begin the contest for this issue (topic = clouds).

We welcome Paul Florence as KSNH's new Invertebrate Coordinator! Paul got his MS degree from University of Louisville's Biology Department. His thesis was titled, "Habitat Preferences in Dragonflies." He's currently an

Associate Professor of Biology at Jefferson Community & Technical College in Louisville.

The Newsletter Photo Contest topics for the remainder of 2009 are contained in that section. We're changing the judging somewhat starting with this issue. Judging will be done once the deadline is passed so that the photos are printed with the winners in the same issue. The winners of the last issue are reported in this issue as well. Remember that the topic for the Summer 2009 KNN issue Photo Contest is **Kentucky Amphibians and/or Reptiles**.

By the way, if there is a topic you'd like to see covered in KNN, whether it be a species, habitat, conservation effort, landform, geologic feature, mineral, celestial body, or basically anything related to natural history, please let me know and I'll do my best to find an author to address it.

As always, please mail any articles, news, photos, etc to kyfauna@iglou.com –ed

2008 FALLS OF THE OHIO CHAPTER WILLIAM CLAY AWARD WINNER – CHRIS BIDWELL by W. H. (Wally) Roberts



The Kentucky Society of Natural History Falls of the Ohio Chapter presents the William Clay Award to a Chapter member in recognition of service. The William Clay Award was presented to Chris Bidwell at the Falls of the Ohio Chapter Christmas dinner in December, 2008. Chris has served as President of the Chapter for the past four years. Prior to becoming the Falls of the Ohio Chapter President, Chris volunteered his time and energy helping to plan and lead field trips. As President, he continues to oversee the Chapter as well as planning and leading field trips and other activities. Chris is devoted to learning about and sharing information on Kentucky's Natural History. We owe Chris our gratitude for serving the Kentucky Society of Natural History and promoting the KSNH mission. Thank you, Chris. (photo by Susan Wilson)

ENJOYING NATURE MORE THROUGH NEST MONITORING

by Tina Phillips



Across North America, longer days and warmer temperatures signal the perennial influx of birds onto their breeding grounds. While migratory and resident birds are staking out territories, thousands of nest monitors—people who monitor the activity of nesting birds— anxiously await their arrival. For some nest monitors, this is a passing hobby, for others, it defines who they are in the spring and summer. And increasingly, experts in the psychology, communication, and environmental fields are confirming what nest monitors and nature enthusiasts have always known – spending time in nature is good for the mind, body, and perhaps even the soul.

Many nest monitors take their passion for birds one step further and become citizen

scientists, engaging in organized research with local, state, or national groups in order to share their observations with others. Citizen science, a term coined by the [Cornell Lab of Ornithology](http://www.cornell.edu/cornell_lab_of_ornithology/) (CLO), provides nature enthusiasts with meaningful opportunities to enjoy nature while also helping to advance scientific research and conservation efforts. The CLO has several citizen science projects that rely on volunteers to collect data on birds via standardized protocols. The strength of this technique to collect large amounts of data is its ability to gather information across huge scales, both in time and space, in order to answer biologically relevant questions.



Sialia sialis (Linnaeus, 1758) (Eastern bluebird)- T. Saunders

Citizen science also helps alleviate the problem of researcher access to private lands. It is estimated that nearly 75% of threatened and endangered birds occur on private property and that nearly three quarters of all forests in the United States are also privately owned. In Kentucky for example, about 95% of the land is privately owned. As natural landscapes continue to decrease, birds and other wildlife will increasingly make use of private lands to survive and breed. Having citizen scientists report how birds use these lands helps to fill a huge gap in our knowledge about habitat quality and its effects on birds.

[NestWatch](#) is the Cornell Lab of Ornithology's newest citizen science project that teaches people how to effectively monitor bird nests and report breeding data. Funded by the [National Science Foundation](#) (NSF) and developed in collaboration with the [Smithsonian Migratory Bird Center](#), NestWatch engages birdwatchers of all skill levels to repeatedly monitor bird nests, collect breeding data, and submit their nest records online where they are permanently archived. The data can be accessed and studied by scientists and the public alike.



Tammie Saunders (Caldwell County Elementary School, Princeton, KY) monitors a nest box

NestWatch accepts data from all nesting birds in North America, thereby allowing us to detect changes in reproductive timing and fledging success across a range of species and geographic areas. Since most NestWatch participants are monitoring birds in their yards and neighborhoods, the data can also be used to understand how birds use human modified habitats such as backyards, fragmented wood lots, golf courses, and roadways, and what affect these landscapes have on nesting success.

Although NestWatch officially launched in 2008, it contains more than 85,000 nest records and its protocol for monitoring nests is based on the historic Cornell Nest Record Card Program, which dates back to 1965. This program relied on volunteers to monitor nests on a regular basis and record what they observed during each visit on standard 3x5 data cards. During its 40+ years in operation, the Cornell Nest Record Card Program amassed over 330,000 nest records from 600

species of breeding birds across North America. Plans are underway to incorporate this enormous dataset into NestWatch, making it the largest database of its kind in North America.

Long-term datasets are critically important in order to maintain baseline information about individual species to monitor trends over time. Increasingly, these datasets also are being used to study how birds respond to climate change. For example, recent studies have shown that in warmer climates, egg-hatching failure is more prevalent, and that on average, birds are beginning to lay eggs earlier. In order to track nesting success as a function of climate change it is crucial that we continue to monitor how well birds are breeding through projects like NestWatch.

Developed with a broad array of audiences in mind, NestWatch invites backyard birders, nest-box monitors, school groups, wildlife refuges, bird observatories, state atlas projects, public land managers and anyone with an interest in birds to participate. There is no fee to join, and no minimum number of nests required, although on average, individual NestWatchers monitor between 20 and 25 nests!

The first step to becoming a responsible nest monitor is to learn which birds typically occur and breed in your region during the spring and summer.



Troglodytes aedon (Vieillot, 1809) (house wren) eggs - B. Zimmerman



Kaycee Lichliter checking a bluebird nest box

Beginners are encouraged to focus their efforts on the NestWatch focal species - 25 of North America's most common nesting birds, chosen because of their relative abundance and their tendency to nest in human-modified habitats such as backyards. Focal species include the American Robin, Eastern Bluebird, Tree Swallow, Eastern Phoebe, Mourning Dove, and other common birds that are easy for beginners to identify and quite tolerant of regular nest checks. Since many of the focal species exist throughout urban, suburban, and rural landscapes, they are ideal subjects to examine how factors such as predation, land use changes, cowbird parasitism, and climate change vary across the urban-to-rural gradient.

Additionally, about half of the focal species are cavity-nesters that readily nest in a nest box or birdhouse, making them even more accessible for monitoring. Providing nest boxes for the 40+ species of cavity-nesting birds can offset the shortage of natural cavities in

otherwise adequate habitat. In fact, it is widely believed that the increase in nesting sites provided by nest-box monitors helped to reverse the noticeable decline of the Eastern Bluebird, now considered fairly common in our region. Other common species like Black-capped Chickadees, House Wrens, Tree Swallows, Tufted Titmouse, American Kestrels, Barred Owls and Wood Ducks can also benefit from artificial nesting sites. Visit our resource center at www.nestinginfo.org for more information about providing and building nest boxes for specific birds.

Providing a nest box however, is only the first step. To truly benefit our feathered friends and aid in conservation efforts, careful monitoring at the nest is equally important. People are usually surprised to learn that regular, careful nest checks rarely lead to nest abandonment or harm to birds. The key to responsible nest monitoring is to be as unobtrusive as possible and abide by the [NestWatch Code of Conduct](#), one of many instructional support materials available at the NestWatch web site. After reading the Code of Conduct, NestWatch participants can test their understanding by taking the interactive nest monitor certification quiz. Other online support materials include the NestWatch manual, how-to videos, and a discussion forum for participants to communicate with each other and NestWatch staff.

As a general rule, nest monitors should avoid checking nests in the early morning during egg laying, during the first few days of incubation, in bad weather, and when the young are close to leaving their nest. Nest monitors work quietly and efficiently but will often sing a song as they approach a nest so as to not startle a bird. If an adult leaves the nest upon your arrival, check the nest quickly, being careful not to touch eggs or young and record your observations away from the nest. If you approach a nest with a sitting adult do not force her out—instead leave the area and check the nest another day. If necessary, observe the nest from a distance or through binoculars.

Although the NestWatch protocol for monitoring nests is flexible, the most robust data will come from nests that are monitored at least once, but preferably twice per week. Information collected includes location, habitat, species, number of eggs and young in the nest, and important dates such as first egg, hatch and fledge dates. Volunteers enter their field observations online as the season progresses or at the end of the season. All nest records are permanently stored in our online database and can be retrieved and downloaded at any time. We also provide Google map queries to visualize for example, how clutch size varies across a bird's breeding range.



Falco sparverius L., 1758 (American kestrel) female with young in nest box - A. Droske,

Whether you are a beginner or expert nest monitor, your nest observations can contribute to our understanding of impacts of environmental change on avian reproductive biology. With these basic breeding variables, we can track changes in reproductive

timing and fledging success as well as daily nest survival (i.e., the proportion of nests that did not fail on a given day, while the nests were under observation). NestWatch provides the long-term infrastructure for a continent-wide, centralized database on breeding birds that can be used to address important conservation issues at relevant and previously unattainable spatial scales.

Together, our community of volunteers, whether contributing data from a backyard, a nest-box trail or a wildlife refuge, provide critical data needed to understand the factors that limit breeding success across the continent. In addition to the satisfaction of making meaningful contributions to science, NestWatch participants enjoy the positive restorative benefits of being outdoors and experiencing nature first hand. To learn more about how you can become a NestWatch participant, please visit www.nestwatch.org.

Tina Phillips is project leader for [NestWatch](#) and [NestCams](#), two of the Cornell Lab of Ornithology's citizen science projects. Currently, pursuing a PhD in science education at Cornell University, she is interested in the relationship between citizen science participation and environmental literacy and behavior.

NOTES FROM THE NATURE NUT: SMOKY MOUNTAIN MEMORIES OF MOUNT LECONTE

by W. H. (Wally) Roberts



Over the years, my friends and I have hiked more than 1500 miles of trails in and around the [Great Smoky Mountains National Park](#). All of these hikes have left, what I like to call, special moments in time with friends. I took my first hikes in the Smokies with my Dad while fishing for trout during the 1960's. My friends and I started serious hiking in the Smokies every chance we could get, mainly during the spring and summer teacher breaks, in the early 1970's. In the beginning, we were tent campers, but eventually purchased a pop-up camper which many of you may remember from KSNH conferences.

All the trails in the Smokies leave lasting memorable moments; but the most memorable of all remain of our trips to [Mt. LeConte Lodge](#). We have visited Mt. LeConte approximately a dozen times over the years. Sometimes hiking up and down the same day, but most often staying overnight at the lodge on top of LeConte.

During the early years, the National Park had not yet been designated as a wilderness area unlike its present status as an [World Biosphere Reserve](#). LeConte Lodge guests were still allowed to pick up fallen wood to burn in stoves to heat the cabins. A huge garbage dump near the lodge attracted scavengers including black bears which eventually became problem animals, and there was not a registration system in place for backcountry shelters such as the one on LeConte where over 150 people camped on a Saturday night in October during the early seventies.

During the spring school break of 1975, Larry Houston and I invited fellow faculty member, Mary Jane Inman, and her teenage daughter, Julia, to accompany us on a week-long camping and hiking trip to the Smokies. This trip occurred during the week of April 15th, and still remains as one of my most lasting memories in the Smokies. The following excerpts are taken directly from our journal dated April 14 and 15, 1975:

We decided to base tent-camp at the Park service's Elkmont Campground outside Gatlinburg because of its central location. We had reservations for Mt. LeConte Lodge on April 13th, but could not go on that day due to heavy rain. We called LeConte and switched our reservations to the following day (Note: This is something you could do in the 1970's, however, it would not be possible today due to the overwhelming demand for reservations.)

We left Mary Jane's car at the Cherokee Orchard parking area and proceeded in my station wagon up [Roaring Fork Motor Nature Trail](#) to the [Trillium Gap Trailhead](#) parking area. As we hit the trail, the air temperature was 65 degrees and a light rain was falling. After visiting [Grotto Falls](#) on the muddy trail, the weather began to cool and, at 4000 feet, the rain began changing into ice, sleet, and snow. A train of supply horses passed us on the way to LeConte, and again on their downward journey carrying empty refillables and staff mail. By that time, most everything was covered with ice; and we quickly downed a cold trail lunch at Trillium Gap but found little or no shelter from the biting cold wind and ice.

We continued up the trail below the cliff-line along several icy ledges as the increasing ice layered and crackled upon the trees. We gingerly traversed a frozen waterfall, a spot where we later learned one of the pack horses had slipped and fallen to its death the week before. We arrived at the lodge hot from hiking while cold from the elements, tired, and, at the same time, afraid to touch our hair, eyebrows, and mustaches for fear of the ice covered hairs would break off. We checked in at the lodge, warmed our bodies with hot chocolate, and dried our clothes. It seemed, at that time, as though we were the only hikers on the mountain.

We entered our small three room cabin and were disappointed to find there was no fire in the stove. On previous trips, we simply gathered wood outside; but this time the heavy rains and ice coating made burning the wood impossible. But, alas, we spied a pile of new froe-hewn wooden shakes intended for roof repairs. The shakes doused with a little kerosene from the lanterns, quickly warmed the room.

Supper was served at the main lodge; and we shared the meal with a park service trail crew who were stationed on the mountain to clear storm-blocked trails. During our meal conversations, we found out that this was the same trail crew that had found two Eastern Kentucky University students lost in a snow storm two weeks earlier on the [Appalachian Trail](#), one of whom had died of hypothermia.

Upon returning to our cabin, we discovered a most interesting lady sharing our accommodations. Her name was Gracie Mae McNichol. Gracie McNichol was born October 1, 1891, had practiced nursing in every state of the Union (including Alaska during the gold rush era) and was making her 169th trip to LeConte Lodge. Gracie came so often that LeConte provided her a private room in our cabin, and she carried her own food. She was so interesting that we talked from 7:00 pm to 11:00 pm before turning in for the night. When the shakes for the fire were used up, the winds had increased to over 30 mph. The door to our cabin kept blowing open and had to be propped shut with a chair. The night was painfully cold, without heat, and, despite the layers of Hudson Bay blankets, one could hear Mary Jane, a Spanish teacher, cursing in Spanish all night long. None of us got much sleep that night. In the morning, when we checked on Gracie Mae, we first thought she might have frozen to death; however, she began to stir when we spoke her name.

The morning brought clear skies and one of the most incredible hoar frosts I had ever seen. Ice crystals covered everything ...extending 3 inches or more on the lee sides. After breakfast, we bade farewell to Gracie and the trail crew and headed down the [Bullhead Trail](#) that seemed like walking through an ice cathedral as we descended the mountain into the beautiful [Sugarland Valley](#).

I have hiked to LeConte many times since, met Gracie on the mountain again, but this one trip remains fixed in my memory as a very special time.

Gracie Mae McNichol took her 244th trip to Mount LeConte to celebrate her 92nd birthday. She didn't begin climbing LeConte until the age of 62 years. As she approached her 100th birthday, Gracie told a friend, "I'm climbing Mount LeConte in my mind this year". Gracie died at the age of 100 years in 1991. I take pride in having known Gracie Mae McNichol; and I am honored that she signed my Hiker's Guide to the Smokies on that memorable day in April, 1975.

Wally Roberts was Kentucky Naturalist of the Year 2002. He is a long-time biology instructor, interpretive naturalist, and nature photographer. He graduated with a BS in Biology from Morehead State University, and MEd in Biological Education from the University of Louisville. He's been president of KSNH (3 times), former president of the Falls of the Ohio Chapter, and past president of the Board of the Louisville Nature Center. He's currently the Grant Coordinator for KSNH.

THE UNITED STATES NIGHTJAR SURVEY NETWORK NEEDS PARTICIPANTS IN 2009

By Kate Heyden

The [Center for Conservation Biology](#) developed the [United States Nightjar Survey Network](#) in 2007 to begin the process of collecting data on the population distribution and population trends of nightjars. Very little is known about nightjar biology. Prior to this program there was no widespread monitoring strategy for nightjars. Conservation-minded citizens, biologists, and other like-minded groups fuel the Nightjar Survey Network by volunteering to conduct survey routes. Objectives of this project include gaining a better understanding of the population distribution and habitat use of nightjars, as well as, detecting population changes on the long-term.

Participation is easy. Surveys are conducted along roads, at least 30 minutes after sunset, between moonrise and moonset and should take less than two hours to complete. Survey routes are comprised of 10 roadside stops which are roughly one mile apart. Data forms can be submitted electronically via



Chordeiles minor (J. R. Forster, 1771) (common nighthawk)
by Kate Heyden

the Nightjar survey Network website or by mail to United States Nightjar Survey, Center for Conservation Biology, College of William and Mary, Williamsburg, VA 23187-8795.

Those who participate will need:

1. Suitable transportation to complete a survey
2. Good hearing to count birds at a distance
3. Ability to recognize and differentiate calls of the three Kentucky nightjar species
4. Commitment to conduct a survey, once per year, for 3 or more years
5. Ability to schedule surveys during the survey window. (The 2009 survey windows are May 31-June 15 and June 29-July 15). Nocturnal behaviors of nightjars are strongly influenced by moonlight. Thus, survey windows are restricted to bright moonlit nights.

Please visit the Nightjar Survey Network website (<http://www.ccb-wm.org/nightjars.htm>) to sign up for a survey route. Most [Kentucky routes](#) are currently vacant and your help is needed. At the website, you can also view project objectives and a report on findings from the initial years of survey. The website also has an informative [Nightjar Pamphlet](#) available that you may share with friends.

The species of nightjars that occur in Kentucky during the breeding season include:

Caprimulgus vociferus A. Wilson, 1812 (whip-poor-will) can be found statewide.

Caprimulgus carolinensis J. F. Gmelin, 1789 (chuck-will's widow) is found primarily west of the Cumberland Plateau.

Chordeiles minor (J. R. Forster, 1771) (common nighthawk) can be found statewide.

Visit <http://www.enature.com> or <http://www.birds.cornell.edu/AllAboutBirds/BirdGuide> and search for nightjar species to learn more about species identification.

This program's success relies entirely on volunteer participation and is a great way to get involved with avian conservation in Kentucky. The efforts of volunteers and those which help recruit volunteers are much appreciated.

Kate Heyden is an avian biologist for the Kentucky Department of Fish & Wildlife Resources. She specializes in raptors and songbirds. She previously worked on red-cockaded woodpeckers in Louisiana before moving to Kentucky to work with the state about a year ago.

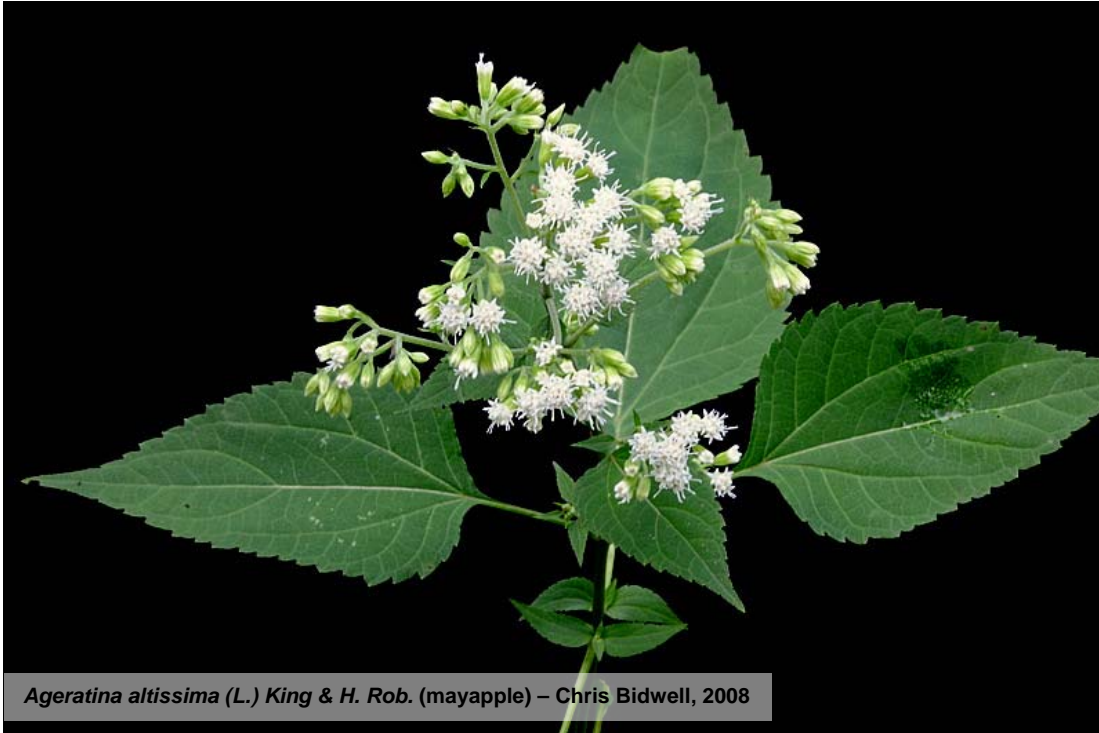
WHITE SNAKEROOT – *AGERATINA ALTISSIMA* (L.) R. M. KING AND H. E. ROBINS

by Chris Bidwell

In keeping with [Abraham Lincoln's Bicentennial](#) birth celebration, it is appropriate to discuss a plant that is very much a part of the Lincoln family history and much to do in forming the very character of Abraham at an early age. Abraham's mother, Nancy Hanks Lincoln, was born February 5, 1784. She married Thomas Lincoln on June 12, 1806 and bore three children: Sarah, 1807; Abraham, 1809; and Thomas, 1812. In 1816 Thomas and Nancy, with their immediate family and other relatives, moved to southern Indiana and settled in the small town of [Little Pigeon Creek](#) in Spencer County. Just two years later, Nancy and several other relatives would die of the "milk sickness", a disease brought on by drinking unpasteurized, toxic milk of cows suspected of eating the poisonous [white snakeroot plant](#) (*A. altissima*). Nancy died October 15, 1818 at only 34 years of age. Abraham was only 9 years old and his mother's death deeply impacted his early life. Abraham, in recalling his mother's death, would remember carving pegs for her coffin. In one of his few autobiographies, he states: "All that I am, or hope to be, I owe to my angel Mother". At 9 years old and with only a slightly older sister left to provide any maternal comfort, Abraham surely missed his mother's love and guidance.

White snakeroot was given the species name, [Ageratina altissima](#) by Linnaeus. It is a common, native perennial found from Texas northward to North Dakota and includes all the states east of this line. The plant is most abundant and distributed in Ohio, Illinois, and Indiana. The plant is adaptive to various growing conditions and can be found in open shade areas, woodland borders, seeps, bluffs, riparian areas, vacant lots, backyards, and dry to mesic woods throughout Kentucky. It is in bloom from July to October. White snakeroot has many common names: richweed, fall poison, white topped deerwort/boneset, white sanicle, Indian sanicle, squawweed, milk sick cove/holler/ridge/knob, and tall boneset. White snakeroot was recently changed from the genus *Eupatorium* to the genus *Ageratina*. Some texts still refer to white snakeroot as *Eupatorium rugosum*. It is in the aster/composite family (Asteraceae). The current genus, *Ageratina*, is a diminutive of the *Ageratum* genus suggesting the genera are similar. The specific epithet, *altissima*, means tall and refers to the fact that the plant can reach up to 1.5 meters tall. White snakeroot, the more common name in Kentucky, comes from the white flowers and called Snakeroot from an erroneous

belief among native Indians and early settlers that the plant's rhizomes, used as a poultice, could cure snake bites. The plant is very aggressive and can dominate an area under ideal conditions. It is listed as an invasive weed in some texts.



Ageratina altissima (L.) King & H. Rob. (mayapple) – Chris Bidwell, 2008

The leaves are opposite, coarse, sharply-toothed with teeth pointing toward the leaf tip. The cordate/ovate leaves can be up to 7 inches long and 5 inches wide and may be slightly hairy on the underside along the main vein. Petioles/ leaf stalks are 1/4 to 1/3 the length of the leaf blade. The white flowers are borne on the upper stems in compound corymbs that can be several inches across. The flower heads are about 1/2 inch across and contain 10-30 disk florets with small 5-lobed corollas that are often fragrant. It is one of the last fall-blooming wild flowers in Kentucky. The flowers are pollinated by a host of insects drawn in by the nectar and pollen.

Pollinators include many species of bees, wasps, flies, butterflies, and moths. Some caterpillars are also known to feed on the leaves (tiger moths). Most herbivore mammals avoid the plant due to its toxic nature. The seeds which develop are [achenes](#) and are distributed by the wind. White snakeroot can also spread by its rhizomes.

White snakeroot contains the toxin [tremetol/tremetone](#). Cattle, horses, sheep, swine, and goats, if allowed to graze this plant, will have their meat and milk contaminated. This toxin can then be passed on to humans who have ingested the animal products as a food source. Signs and symptoms of the "milk sickness" disease in herbivores include: lethargy, excessive nasal discharge and salivation, seizures, difficulty in breathing, fever, trembling, severe constipation, acetone breath, prolonged vomiting leading to severe dehydration/weight loss, uncoordinated gait, and coma. Death follows if significant snakeroot is ingested. All parts of the plant are poisonous with the roots being the most toxic plant part.

The disease in humans who have ingested contaminated meat/milk from affected animals also can develop "milk sickness". The disease in man is also known as puking fever, slows, trembles, and sick stomach. This disease in humans causes loss of appetite, lethargy, muscle aches/stiffness, halitosis, severe constipation, dehydration, from protracted vomiting which can lead to seizures, coma, and eventually death in severe cases. Recovery in man and animals is possible in minor ingestions of the toxin tremetol. Milk sickness was first described/diagnosed in medical terms by Dr. Thomas Barbee of [Bourbon County, Kentucky](#) in 1809. Ironically this was same year Abraham was born. Bloodletting was employed as a treatment, with no success.

In October, 1818, Nancy Hanks Lincoln died from the milk sickness disease. Lincoln's law partner and biographer, William Herndon, described the disease as such: "It hovered like a spectre over the Pigeon Creek settlement for over 10 years, and its fatal visitation and inroads among the Lincolns, Hawkses, and Sparrows finally drove that contingent into Illinois. To this day the medical profession has never agreed upon any definite cause for the malady ... A fatal termination may take place in 60 hours, or life maybe prolonged for a period of 14 days...".

The search for the cause of the [milk sickness](#) underwent many wrong directions. As early as 1838, two separate layperson's experiments had shown white snakeroot to be the culprit. Their findings were published in local newspapers and even sent to some of the country's leading medical people who merely dismissed their findings as false. This lack of follow up and censure by the medical profession set the search back nearly a century.

In 1838, an Ohio farmer, John Row, suspected white snakeroot as the cause. He fed leaves to some of his cattle which develop the sickness and died. The farmer published his exciting findings in the local newspaper. The famous physician, Dr. Daniel Drake, denounced the farmer's experiment as Dr. Drake was sure that [poison ivy](#) was the cause! Dr. Drake's negative actions and failure to further investigate set back milk sickness research, diagnosis, and treatment for several decades. About

the same time as John Row was discovering white snakeroots toxicity, a pioneer woman, Anna Bixby, came into the Illinois frontier with her family. Ms. Bixby was so upset with the poor health and death rate on the frontier that she returned to Pennsylvania to take training in nursing, midwifery, and dental extractions, which were the only medical courses women could take at that time. She returned to Illinois and practiced as Dr. Anna. A milk sickness epidemic swept through her community and she noted in her diary that the deaths followed those who ingested milk. Anna tried to locate the plant which the cows grazed upon but was unsuccessful until she met an Indian medicine woman known as Aunt Shawnee. She took Dr. Anna into the fields and showed her white snakeroot. Like Mr. Row, Dr. Anna tested the plant on a calf which died. Through her efforts to eradicate white snakeroot from the fields, the dreaded milk sickness was almost eliminated from southeast Illinois in 3 years. Dr. Anna wrote letters back East to famous physicians who, like Dr. Drake, also ignored her and Aunt Shawnee's work.

It was finally in the 1920's that research at the United States Department of Agriculture, led by Dr. James Couch, isolated the toxic alcohol tremetol from white snakeroot and was researched and determined to be the cause of the silk sickness. With fencing laws and supervised milk production since the 1920's, the disease is rarely encountered now.

White Snakeroot did have several supposed medical/folklore usages. Native Americans used the plant's leaves in a tea to treat diarrhea (which is effective) and kidney stones. They also used smoke from the leaves to try to revive comatose patients. White/Indian Sanicle, one of the common names of white snakeroot, derives its name (sanicle) from the Middle English/Medieval Latin word *sanicula*, probably from the Latin, *sanus*, which means healthy or healing. However due to the poisonous nature of this plant medical usage is not regarded as safe or effective.

This summer look for (but don't eat!) white snakeroot. Its beautiful white flowers and fragrance adds color and character to the summer woods. The plant's seed are also used by numerous small birds as a fall/winter food source. Reflect on how this plant impacted Abraham Lincoln and other pioneers and Native Americans throughout Illinois, Indiana, Ohio, and Kentucky. Enjoy the natural world.

REFERENCES:

- Carlinville High School. 2003. South-Central Illinois Flora Studies: White Snakeroot - Asteraceae - *Eupatorium rugosum* Houtt. [Internet]. IL: Carlinville [cited 2009 Feb 15]. Available from <http://www.carlinvilleschools.net/linke/flora/03/wsnk.htm>.
- Clayton, Rebecca. 2007. Pocahontas County Fare: White Snakeroot--Pretty, Toxic. [Internet]. [cited 2009 Feb 15]. Available from <http://pocahontascofare.blogspot.com/2007/08/white-snakeroot-pretty-toxic.html>.
- Haragan, P.D. 1991. Weeds of Kentucky and Adjacent States. The University Press of Kentucky, Lexington, KY. 278 pp.
- Herndon, W.H. and J. W. Weik. 1983. Herndon's Life of Lincoln. New York: NY Da Capo Press, Inc. 568 pp.
- Hilty, John. c2006. Illinois wildflowers - White Snakeroot - *Ageratina altissima* - Aster family (Asteraceae). [Internet]. IL: [cited 2009 Feb 15]. Available from http://www.illinoiswildflowers.info/woodland/plants/wh_snakeroot.htm.
- Jones, Ronald L. 2005. Plant Life of Kentucky: An Illustrated Guide to the Vascular Flora. University Press of Kentucky, Lexington KY. 834 pp.
- PLANTS Profile: *Ageratina altissima* (L.) King & H. Rob. var. *altissima* - white snakeroot. [Internet]. National Plant Data Center, Baton Rouge, LA: U.S. Department of Agriculture Natural Resources Conservation Service. [Cited 2009 Feb 15]. Available from <http://plants.usda.gov/java/profile?symbol=AGALA>.
- Purdue University. 2005. Plant and Pest Diagnostic Laboratory Picture of the Week for August 15, 2005: White Snakeroot. [Internet]. [cited 2009 Feb 15]. Purdue University Plant and Pest Diagnostic Laboratory, West Lafayette, IN. Available from <http://www.ppd.l.purdue.edu/PPDL/index.html>.
- Reed, Daniel. 2001. www.2bnTheWild.com - Wildflowers of the Southeastern United States: White Snakeroot (*Ageratina altissima* var. *Altissima*) page. Mt. Juliet, TN: [cited 2009 Feb 15]. Available from <http://2bnthewild.com/plants/h9.htm>.
- U.S. Department of the Interior, National Park Service. 2004. Lincoln Notebook: The Plant that Killed Nancy Hanks Lincoln. [Internet]. [cited 2009 Feb 15]. U.S. Department of the Interior, National Park Service, Lincoln Boyhood National Memorial. Available from http://www.nps.gov/archive/libo/white_snakeroot3.htm.
- Wikipedia contributors. 2009. Milk Sickness. [Internet]. Wikimedia Foundation, Inc., St. Petersburg, FL: [cited 2009 Feb 15]. Available from http://en.wikipedia.org/wiki/Milk_sickness.
- Wikipedia contributors. 2009. Nancy Lincoln. [Internet]. Wikimedia Foundation, Inc., St. Petersburg, FL: [cited 2009 Feb 15]. Available from http://en.wikipedia.org/wiki/Nancy_Hanks_Lincoln.
- Wikipedia contributors. 2009. White Snakeroot. [Internet]. Wikimedia Foundation, Inc., St. Petersburg, FL: [cited 2009 Feb 15]. Available from http://en.wikipedia.org/wiki/White_Snakeroot.

Chris Bidwell is an amateur naturalist and the current President of the Falls of the Ohio Chapter of KSNH.

KENTUCKY SOCIETY OF NATURAL HISTORY ANNUAL SPRING CONFERENCE
PINE MOUNTAIN SETTLEMENT SCHOOL - APRIL 24 – 26, 2009

NOTES:

- [Pine Mountain Settlement School](#) is located within the Eastern Time Zone
- All drive times are estimated and for one way, starting from Pine Mountain Settlement School

Field Trip Ratings:

- Easy:** Hiking short distances usually on trails with little slope.
Moderate: Generally easy with a comfortable pace. Participants must be able to negotiate occasional steep slope and/or rough trail.
Strenuous: More endurance required to negotiate longer stretches of steep slopes and rough trail.

*** Be careful on all of the field trips and watch your step. Also, watch above your head for dead trees and limbs which could fall. When carpooling to and from field trips be careful driving on the steep, winding roads. Be safe and have a great Spring Conference.

FRIDAY, APRIL 24, 2009

Field Trips for Early Arrivals (Early Bird Special)

1:00 – 4:00 Pine Mountain Settlement School’s Railroad/Dogwood Trail – Numerous trails on campus offer outstanding natural experiences, but botanically (plant lovers) this trail is probably the most diverse. Participants will see a variety of spring wildflowers on this trip, and may get a glimpse at a beaver, shore birds, or water fowl in the large beaver pond complex.

Drive Time – N/A

Rating – moderate

Trip Leader – Ben Begley

6:00 Dinner (locally called Supper) at Pine Mountain Settlement School

6:30 Late Registration (Laurel House)

7:00 Evening Program Starts:

Welcome and Introductions – Joe Settles

Children’s Program Topics – Jeff Foster

Photography Program Topic – Topic for spring meeting will be “KENTUCKIANA MOUNTAINS” – **Chris Bidwell**

General Topics – Open to All

Research Grant Presentation – FAUNISTIC SURVEY OF NATIVE AND INVASIVE SLUGS IN KENTUCKY USING MORPHOLOGICAL AND MOLECULAR TECHNIQUES. **Anna Thomas, a masters candidate received \$450 from KSNH toward her research. University of Kentucky Department of Entomology.**

Featured Presentation #1 – “EASTERN SMALL-FOOTED BAT (*MYOTIS LEIBII*) STATUS AND SUMMER HABITAT USE” – **Joseph Johnson**

SATURDAY, APRIL 25, 2009

7:00 – 8:00 Early Morning Bird Walk on Pine Mountain Settlement School’s Campus – This trip is for all of the society’s hard-core birders. No other birder knows where to find birds at Pine Mountain Settlement School like the person who volunteered to lead this outing. Weather dependent, highlights may include as many as thirty bird species, including a number of neotropical migrants and the state listed common raven.

Drive Time – N/A

Rating – easy

Trip Leaders – Ben Begley

8:00 Breakfast at Pine Mountain Settlement School

Full Day Field Trips

9:00 – 4:00 [Blanton Forest State Nature Preserve](#) – Visit one of Kentucky’s prized natural areas with an extremely talented naturalist, who has spent his entire life in the shadows of Pine Mountain. Enjoy a quite hike through many different forest types and learn all you wanted and even more about this spectacular nature preserve. Highlights will include impressive geological features, and many spring flowering plants.
Drive Time – 60 minutes **Rating – Strenuous** **Trip Leader – Kyle Napier**

Morning Field Trips

9:00 – 12:00 [Gabes Branch Waterfall](#) – Visit one of the areas small waterfalls with past KSNH Naturalist of the Year and learn about its associated water quality, flora and fauna. Highlights may include a diverse spring wildflower assemblage, salamanders, and neotropical birds.
Drive Time – 30 minutes **Rating – moderate** **Trip Leader – Ben Begley**

9:00 – 12:00 **Small Mammal and Wetland Plant Extravaganza** – Explore the rarely seen small mammal fauna and hydric plants at Pine Mountain Settlement School’s wetlands. Participants on this trip will view small mammals (mice, shrews, and voles) live caught in Sherman traps located around the edges of wetlands and learn to identify wetland plants (e.g. sedges, rushes). If weather cooperates, participants may see the short-tailed shrew, white-footed mouse, golden mouse, bog lemming, and hispid cotton rat. This site is the eastern-most location for hispid cotton rat in Kentucky.
Drive Time – N/A **Rating – easy**
Trip Leader – James Kiser

9:00 – 12:00 [Hi-Lewis Barren Nature Preserve](#) – Visit one of Kentucky’s nature preserves, where disturbances (e.g. fire and southern pine beetle outbreak) have sculpted its current condition. This site provides a good view of Black Mountain from Pine Mountain’s southern slope. Exposed sandstone glades and oak savannas and associated flora and fauna will be the highlights of this trip. Participants may see eastern prickly-pear (cactus), pink corydalis, and a variety of other xeric species of plants.
Drive Time – 30 minutes **Rating – moderate**
Trip Leader – Zeb Weese

South side of Pine Mountain looking toward Black Mountain, Harlan Co., KY – James Kiser



12:00 – 1:00 **Lunch at Pine Mountain Settlement School**

Afternoon Field Trips

1:00 – 5:00 **Little Shepherd Trail Carpool/Sand Lake Area** -This single lane gravel/paved road extends along the crest of Pine Mountain from US 421 (Harlan) to US 119 (Whitesburg). We will be traveling along the section from [Shell Gap](#) to [Kingdom Come State Park](#) and taking short hikes into habitats used by state listed small mammals, scenic overlooks, and sandstone cliffs. The Sand Lake area is located on the dry southern slope of the Mountains and is surrounded by a community dominated by members of the Heath family. Nature lovers on this trip will see and learn about several natural communities. Highlights will include a diverse spring flora, including pink lady-slippers, and possibly a rare club moss.
Drive Time – 30 minutes **Rating – moderate/strenuous** **Trip Leader – Ben Begley**

1:00 – 5:00 **Cawood Branch Salamander & Spring Wildflower Trip** – This excursion will focus on salamanders and spring wildflowers along a small mountainous stream. This high quality stream will provide participants an opportunity to observe three species of dusky salamander and southern two-lined salamanders. The adjacent shale cliffs provides habitat for the long-tail salamander, green salamander, and seal salamander. The mesic slopes and floodplain contains numerous spring flowering wildflowers. Highlights may include as many as 10 species of amphibians and more than two dozen species of spring wildflowers.
Drive Time – 30 minutes **Rating – easy** **Trip Leader – James Kiser**

6:00 **Supper at Pine Mountain Settlement School**

7:30 Evening Program Starts:

Welcome and Introductions – Joe Settles

Review of Saturday Field Trips – Moderator – James Kiser

Children’s Program Awards – Jeff Foster

Featured Presentation #1 – “WHITE NOSE SYNDROME: ITS AFFECTS ON NORTH AMERICAN BATS” – Joe Settles

Featured Presentation #2 – “UNIQUE NATURAL AREAS OF KENTUCKY” – Marc Evans

Photography Competition & Awards – Chris Bidwell

General Topics – Open to All

Door Prizes – Cherry Baker

9:30 – 11:00 Salamander Forray on Campus – Bring your flashlights and enjoy the diverse salamander fauna inhabiting Pine Mountain Settlement School’s forest floor and streams. Participants may see the large semi-aquatic salamander [Black Mountain salamander (*Desmognathus welteri*)] that was described and named by legendary Kentucky naturalist, Roger Barbour, or the Cumberland Plateau salamander (*Plethodon kentucki*) that was split from northern slimy salamander (*P. glutinosus*) and resurrected into a species by John MacGregor and Dick Heighton. Results of this trip are weather dependent, but highlights may include as many as 11 species of amphibians.

Drive Time – N/A

Rating – easy

Trip Leader – James Kiser



Plethodon kentucki Mittleman, 1951 (Cumberland Plateau salamander) - Harlan Co., KY – James Kiser

SUNDAY, APRIL 26, 2009

7:00 Board Meeting in Laurel House – All board members are encouraged to attend (Working Breakfast)

8:00 Breakfast at Pine Mountain Settlement School

9:00 – 12:00 Pine Mountain Settlement School’s Railroad/Dogwood Trail – Numerous trails on campus offer outstanding natural experiences, but botanically (plant lovers) this trail is probably the most diverse. Participants will see a variety of spring wildflowers on this trip, and may get a glimpse at a beaver, shore birds, or water fowl in the large beaver pond complex.

Drive Time – N/A

Rating – moderate

Trip Leader – Ben Begley



Peromyscus maniculatus nubiterrae - Rhoads, 1896 (cloudland deer mouse) – Harlan Co., KY - James Kiser

9:00 – 12:00 Small Mammal and Wetland Plant Extravaganza – Explore the rarely seen small mammal fauna and hydric plants at Pine Mountain Settlement School’s wetlands. Participants on this trip will view small mammals (mice, shrews, and voles) live caught in Sherman Traps located around the edges of wetlands and learn to identify wetland plants (e.g. sedges, rushes). If weather cooperates, participants may see the short-tailed shrew, white-footed mouse, golden mouse, bog lemming, and hispid cotton rat. This site is the eastern most location for hispid cotton rat in Kentucky.

Drive Time – N/A

Rating – easy

Trip Leader – James Kiser

9:00 – 12:00 Pine Mountain Settlement School Tours & Hikes – Explore the campus of this historic boarding house and learn about past and present uses of the facility. Numerous buildings contain antique equipment and furniture which is still being used to educate children.

Drive Time – N/A

Rating – easy/moderate Trip Leader – Pat Begley

The Kentucky Society of Natural History would like to thank the following field trip leaders/speakers and their respective employers.

Ben Begley
Pat Begley
Marc Evans
Joseph Johnson
James Kiser
Kyle Napier
Joe Settles
Anna Thomas
Zeb Weese

[Pine Mountain Settlement School](#)
[Pine Mountain Settlement School](#)
[KY State Nature Preserves Commission](#) (Retired)
[UK Department of Forestry/Stantec](#)
[Stantec Consulting Services](#)
[KY State Nature Preserves Commission](#)
[East Kentucky Power Cooperative](#)
[University of Kentucky - Department of Entomology](#)
[KY State Nature Preserves Commission](#)



Thanks for attending Kentucky Society of Natural History's 2009 Spring Conference and mark your calendars for the 2009 Fall Conference at Reelfoot Lake on October 8 – 11, 2009.

ANNOUNCEMENT: KSNH 2008 FALL MEETING AT REELFOOT LAKE - OCTOBER 8-11, 2009
by W. H. (Wally) Roberts

This will be KSNH's first conference at [Reelfoot Lake State Park](#) and is in response to membership demand. The earthquake history, location near the Mississippi River, long-growing season, and cypress swamps make this area a very unique conference location. Fall waterfowl and eagle migration will be underway, early fall colors will be appearing, while fall wildflowers will still be in bloom, and Reelfoot's large herp population will still be active.

Please mark your calendars for this extended conference weekend and watch for package pricing in upcoming newsletters. Reelfoot is definitely a naturalist's paradise.

CHAPTER NEWS

Falls of the Ohio Chapter News (see front cover for regular meeting times and place, field trip times may be found below or are to be determined. Contact Chris Bidwell for more information.)

| 2009 Dates | Event/Speaker | Topic / Outing | Photo Contest Topic |
|--------------|---|---|------------------------------|
| March 19 | Meeting: Ed Triner | Galapagos Islands | KYANA Streams |
| March 21 | Field Trip: Dr. William Pearson | Cave trip to the Louisville Grotto's Lone Star Reserve . Meet at the Louisville Nature Center at 9:00 AM. | |
| April 16 | Meeting: Dr. Keith Mountain | Glaciers and Global Warming | Art Forms in Nature |
| April 18 | Field Trip: Larry Hilton | Floyds Fork Tour – TBD | |
| May 21 | Meeting: Major Waltman | Olmstead Parks | Snails |
| May 23 | Field Trip: TBD | Car Tour of the Olmstead Parks | |
| June 18 | Meeting: Larry Melcher | Purple Martin Restoration Project | Guess What This Is in Nature |
| June 20 | Field Trip: Robert Bridges | Purple Martin Site Outing & Picnic @ Bernheim Arboretum & Research Forest | |
| July 16 | Annual Picnic: Kurt Mason | Soil Conservation | none |
| September 17 | Meeting: Dr. Mark Wourms | Tentative Topic: Bernheim Forest | Moths & Butterflies |
| September 19 | Field Trip: TBD | TBD | |

Kentucky Naturalist News: Volume 67, Number 1 – Spring 2009

| | | | |
|-------------|---|---|---|
| October 15 | Meeting: Dr. Art Parola | Stream Restoration | Halloween's Patterns & Colors in Nature |
| October 17 | Field Trip: Carl Suk | Jefferson County Memorial Forest & Non-Native Invasive Plants | |
| November 19 | Meeting: TBD | TBD | A Fall Leaf (single leaf) |
| November 21 | Field Trip: TBD | Muscatatuck National Wildlife Refuge | |
| December 17 | Annual Dinner: | TBD | none |

SPRING 2009 NEWSLETTER PHOTO CONTEST – THE TOPIC IS CLOUDS



altocumulus clouds - Julian Sacksteder, 2006



stratocumulus undulatus - Berl Meyer, 2006



stratocumulus undulatus - Julian Sacksteder, 2007

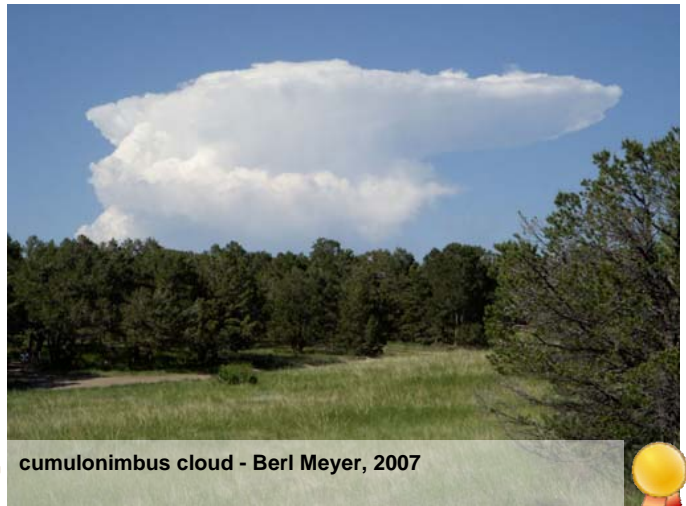


lenticularis clouds - Berl Meyer, 2006





fog on the Ohio River - Julian Sacksteder, 2007 10/30/2006



cumulonimbus cloud - Berl Meyer, 2007



stratocumulus mamma clouds - Barry Nichols, 2006



stratocumulus mamma clouds - Barry Nichols, 2006

The Spring 2009 Newsletter Photo Contest had 17 judges.

Newsletter Photo Contest Topics for 2009+:

Summer 2009 - Kentucky Amphibians and/or Reptiles

Fall 2009 – Fall Color

Winter 2009 – Kentucky Winter Bird Residents

Spring 2010 – Fungi

KNN Winter 2008 Photo Contest Results:
Topic was "snow". There were 31 judges.



1st Place: "G" - Barry Nichols



2nd Place: "A" – Chris Bidwell



3rd Place: "F" - Susan Wilson



Hon. Mention: "B" - Susan Wilson



Hon. Mention: "C" – Chris Bidwell



Hon. Mention: "D" - Barry Nichols



Mary Jane Glauber

**KSNH FIELD TRIP: ODNATES AT HORNER WILDLIFE SANCTUARY
IN OLDHAM COUNTY, JUNE 6, 2009**

By Paul Florence

On June 6, 2009, there will be a KSNH Odonate Field Trip to Horner Wildlife Sanctuary in Oldham County. Paul Florence will lead a field trip focusing on the variety and biology of local damselflies and dragonflies. Topics covered will include how to tell the difference between damselflies and dragonflies, habitats and the different life stages that can be found in them, food sources utilized by the different life stages, and identification of local species. Details will be arranged later. Parking & attendance will likely be limited. Contact Paul at paul.florence@kctcs.edu or by phone at (502) 499-2714 to reserve a spot.

KENTUCKY NATURALISTS' CALENDAR
(added as space and time allow)

2009:

March 20-21, 2009: Indiana's Natural Heritage: A Public Conversation, [Indiana State Museum](#), White River State Park, Indianapolis, Indiana. This conference is part of a multi-year project that has resulted in the [WFYI](#) (Indianapolis Public Television) award-winning four-part documentary **The Natural Heritage of Indiana**. Learn about science, the environment, sustainable living and more. Pre-conference registration deadline is March 14. More about the project, the conference, and conference registration is available at their website at <http://www.naturalheritageofindiana.org>.

March 21, 2009: Signs of Spring @ Floracliff Nature Sanctuary, P.O. Box 4006, Lexington, KY 40544. Join us on this hike to Elk Lick Creek for a chance to see the first wildflowers of spring. It should a great time to catch trout lilies and bloodroot in bloom. For more information contact Floracliff Nature Sanctuary by phone at (859) 351-7770, via email at floracliff@aol.com, or check the website at <http://www.floracliff.org>.

March 28, 2009: Pollinators with Blake Newton @ Floracliff Nature Sanctuary, P.O. Box 4006, Lexington, KY 40544. Join Blake Newton, UK Extension Specialist for 4H and Youth Entomology, for a program about pollinators and their relationships with the spring wildflowers. For more information contact Floracliff Nature Sanctuary by phone at (859) 351-7770, via email at floracliff@aol.com, or check the website at <http://www.floracliff.org>.

March 28, 2009: Walk in the Park- Iroquois Park Birding Expedition @ Jacob's Lodge in Iroquois Park (9:00am to 12:00pm). Olmsted Parks Conservancy invites you to grab your binoculars and take a walk with Barbara Woerner, Beckham Bird Club member! You will be guided through the hilltop prairie to look and listen for our avian friends celebrating the coming of spring. Donations gladly accepted. Easy to moderate hike. Contact Volunteer and Outreach Coordinator Sara Wolff via email at sarah.wolff@olmstedparks.org, by phone at Phone: 502-456-1623 or on the Olmstead Conservancy website at <http://www.olmstedparks.org>.

April 1, 2009: Mid-week Wildflower Hike @ Floracliff Nature Sanctuary, P.O. Box 4006, Lexington, KY 40544. This hike will provide an opportunity to catch the spring wildflowers for those with some free time during the week. For more information contact Floracliff Nature Sanctuary by phone at (859) 351-7770, via email at floracliff@aol.com, or check the website at <http://www.floracliff.org>.

April 3, 2009: 9th Annual Ohio Botanical Symposium @ Villa Milano (villamilano.com), 1630 Schrock Road Columbus, Ohio, 43229. Symposium is sponsored by [Ohio Division of Natural Areas & Preserves \(DNAP\)](#), [The Cleveland Museum of Natural History](#), [The Nature Conservancy](#), and the [Ohio State University Herbarium](#). Award-winning and world-renowned botanist and conservationist Dr. W. Hardy Eshbaugh will give our keynote address, "The Challenges to Biodiversity Conservation in the 21st Century: Where does Ohio fit in the Equation?" There will be additional talks, posters, vendors, and exhibits from non-profit environmental and conservation groups, park districts, federal and state agencies, and universities. For more information see the Natural Areas & Preserves website at <http://www.ohiodnr.com/tabid/20259/Default.aspx> or call them at (614) 265-6453.

April 4, 2009: The 2009 Annual Meeting of the Kentucky Bluebird Society @ Shakertown, KY (near Harrodsburg). More info to come. See their website at <http://www.biology.eku.edu/kbs/>.

April 4, 2009: Medicinal Wildflowers with Ciara Lockstadt @ Floracliff Nature Sanctuary, P.O. Box 4006, Lexington, KY 40544. Experience the spring wildflowers of the Inner Bluegrass during this hike. The hike is focused on the historical and present day medicinal and useful traits of plants. For more information contact Floracliff Nature Sanctuary by phone at (859) 351-7770, via email at floracliff@aol.com, or check the website at <http://www.floracliff.org>.

April 4, 2009: Wildflower Extravaganza @ John James Audubon State Park, 3100 US 41 North, Henderson, KY 42420. Join us for three leisurely hikes to see the vibrant forest flora as well as participate in programs for all ages. We'll also learn about "problem" plants and how they affect the native plant species during an outdoor invasive species removal. Contact Julie McDonald at (270) 826-2247 or by email at juliea.mcdonald@ky.gov, or visit the park website at <http://parks.ky.gov/findparks/recparks/au/> for more.

April 10-12 or April 17-19, 2009: The Society of Kentucky Lepidopterists (SKL) Spring Field Trip @ Somerset, KY. For details see the SKL website at <http://bioweb.wku.edu/faculty/Marcus/KYLeps.html> or contact trip leader Loran Gibson via email at kymothman@fuse.net, or call President Bill Black

April 17-19, 2009: Wildflower Weekend @ Natural Bridge State Resort Park, 2135 Natural Bridge Road, Slade, KY 40376-9701. The park area is home to hundreds of native plant species; enjoy them this weekend with other botanists, gardeners, and nature lovers. Our field trips are for all levels of participation, and from short, easy walks to longer hikes at Natural Bridge State Park and the Red River Gorge National Geologic Area! Evening speakers will focus on the native plants in the region. Registration fee upon arrival. For more information, contact park naturalist Brian Gasdorf at brian.gasdorf@ky.gov or call 1-800-325-1710, ext 2104. Call the park at (606) 663-2214 or visit their website at <http://parks.ky.gov/findparks/resortparks/nb/> for details.

April 17-19, 2009: Wildflower Weekend @ Pine Mountain Settlement School, 36 Highway 510, Pine Mountain, KY 40810. For over thirty years, Pine Mountain Settlement School has invited the public to enjoy the impressive display of spring wildflowers found on its campus on the north side of Pine Mountain and at other special natural areas close by. You'll enjoy hikes to see wildflowers and other spring phenomenon, interesting evening presentations on natural or cultural topics, great meals and the comradeship of others interested in nature! Fee based. Contact the Pine Mountain Settlement School at 606-558-3571 or 606-558-3542 for details. You can also visit their website at <http://www.pinemountainsettlementschool.com/>.

April 24-26, 2009: Kentucky Society of Natural History (KSNH) 2009 Spring Meeting @ Pine Mountain Settlement School, 36 Highway 510, Pine Mountain, KY 40810. See upcoming newsletter for details or go to the website at <http://www.ksnh.org>.

April 24-26, 2009: Kentucky Ornithological Society (KOS) Annual Spring Meeting @ Mammoth Cave National Park. The featured speaker for the weekend will be Ted Floyd (<http://www.aba.org/birding/editor.html>) who is editor of Birding, the primary publication of the American Birding Association. For more information contact KOS at P.O. Box 463, Burlington, KY 41005 or via their website at <http://www.biology.eku.edu/kos/default.htm>.

May 1-2, 2009: Herpetology Weekend @ Natural Bridge State Resort Park, 2135 Natural Bridge Road, Slade, KY 40376-9701. Discover nature's most misunderstood critters! Experienced herpetologists will lead field trips into the Red River Gorge National Geologic Area to observe reptiles and amphibians in their native habitat. Most Saturday fieldtrips will be offered at 9 a.m. and 1:30 p.m. Collection is prohibited. Friday and Saturday evening presentations will focus on reptile and amphibian natural history and conservation. Some demonstrations will include live venomous snakes! Registration fee upon arrival. For more information contact park naturalist Brian Gasdorf at brian.gasdorf@ky.gov or call 1-800-325-1710, ext. 2104. Call the park at (606) 663-2214 or visit their website at <http://parks.ky.gov/findparks/resortparks/nb/> for details.

May 1-3, 2009: Ohio Valley Birding Festival @ John James Audubon State Park, 3100 US 41 North, Henderson, KY 42420. Join birders and educators from throughout the region at the Tri-State Bird Festival. Learn about birds, birding, and bird habitat through seminars, workshops, hikes and crafts. All ages. This festival is sponsored by Audubon State Park, Wesselman Nature Society, Evansville Audubon Society, and Evansville Wild Birds Unlimited. Contact Julie McDonald at (270) 826-2247 or by email at juliea.mcdonald@ky.gov, or Susan Haislip at (812) 479-0771 (ext 100). or visit the festival website at <http://www.ohiovalleybirdingfestival.org> for more.

May 1-3, 2009: Black Mountain Weekend @ Pine Mountain Settlement School, 36 Highway 510, Pine Mountain, KY 40810. Wildflower lovers will enjoy visiting Black Mountain where wildflowers are abundant and some Kentucky wildflowers are only found there, such as the painted trillium. As with the Wildflower Weekend, you'll have the opportunity to appreciate spring in the mountains, enjoy presentations by experts in natural and cultural topics, eat good food, and visit with other folks who love nature! Fee based. Contact the Pine Mountain Settlement School at 606-558-3571 or 606-558-3542 for details. You can also visit their website at <http://www.pinemountainsettlementschool.com/>.

May 1-3, 2009: Flora-Quest '09 - Shawnee and the Edge @ at the Shawnee State Park resort, Shawnee Lodge and Conference Center, 4404 State Route 125, Portsmouth, Ohio 45663-9003. Flora-Quest is a hands-on learning adventure focusing on wild plants centered at the 65,000-acre Shawnee State Park, Ohio's largest contiguous forest. Just to the west of Shawnee State forest is the sprawling Edge of Appalachia preserve, filled with unusual habitats and possessing one of the state's highest concentrations of rare plants. For more information call (800) 282-7275 or go to the website at <http://www.flora-quest.com>.

June 2-16, 2009: Junior Naturalist Programs @ John James Audubon State Park, 3100 US 41 North, Henderson, KY 42420.
June 2, 2009; 9:00 a.m.-12:00 p.m. Junior Naturalist Programs Ages 10-12; Audubon Museum
June 9, 2009; 9:00 a.m.-12:00 p.m. Ages 8-9; Audubon Museum
June 16, 2009; 9:00 a.m.-12:00 p.m. Ages 6-7; Audubon Museum
June 16, 2009; 7:00 p.m. S'mores Celebration and Awards Ceremony for all Junior Naturalists and their families (Audubon Campground Shelter).
Open your eyes to the amazing wonders in your own back yard. Learn about how we protect these beautiful resources. Programs meet at the Audubon Museum. Kids who attend any one of these dates will receive a patch and certificate. Children ages 10-12 will meet on June 2, Children ages 8-9 will meet on June 9. Children ages 6-7 will meet on June 16. Pre-registration is required. Maximum 20 attendees per date. Contact Julie McDonald at (270) 826-2247 or by email at juliea.mcdonald@ky.gov, or visit the park website at <http://parks.ky.gov/findparks/recparks/au/> for more. Program Fee: \$10.00

June 6, 2009: KSNH Odonate Field Trip @ Horner Wildlife Sanctuary in Oldham County, Kentucky. KSNH Invertebrate Coordinator Paul Florence will lead a field trip focusing on the variety and biology of local damselflies and dragonflies. Details will be arranged later (check the next newsletter). Parking & attendance will likely be limited. Contact Paul at paul.florence@kctcs.edu or by phone at (502) 499-2714 to reserve a spot.

June 6, 2009: Creatures of the Night Adventure Trek/National Trails Day @ Audubon Museum, John James Audubon State Park, 3100 US 41 North, Henderson, KY 42420 (6:00 p.m. – 9:00 p.m.). Venture out with our Interpretation staff on National Trails Day and discover the mysticism of nighttime creatures. Dress for the weather and bring a flashlight. Contact Julie McDonald at (270) 826-2247 or by email at juliea.mcdonald@ky.gov, or visit the park website at <http://parks.ky.gov/findparks/recparks/au/> for more.

June 10-14, 2009: In the Footsteps of Lucy Braun @ Pine Mountain Settlement School, 36 Highway 510, Pine Mountain, KY 40810. This four-day forest study workshop is named in honor of one of the first and foremost conservationists of the 20th century, E. Lucy Braun. Dr. Lucy, as she was called by her colleagues, devoted her life to the study of plants and to conservation campaigns to save wilderness areas and other natural sites. The four-day workshop will combine field trips, lectures, and slide presentations in the study of forest types found in Eastern Kentucky. Daily field trips will include four- to eight-mile hikes. The workshop is geared toward adults. Fee based. Contact the Pine Mountain Settlement School at 606-558-3571 or 606-558-3542 for details. You can also visit their website at <http://www.pinemountainsettlementschool.com/>.

June 21-24, 2009: 4th Hellbender Symposium @ Cumberland Falls State Park, in Corbin, Kentucky. More details to follow.

July 24-26, 2009: Midwest Native Plant Conference @ Hope Hotel at Wright-Patterson Air Force Base in Dayton, OH. This event is hosted by the newly formed Midwest Native Plant Society, [Flora-Quest](#) and the [Greater Cincinnati Wild Ones](#). This conference will include educational programs and field trips designed to connect people and nature. The focus will be on native prairies and wetlands with emphasis on the importance of native plant communities. For more information see their website at http://cincinnatiwildones.com/wildones/MWNP_Society/preregister.php or call (513) 941-6497.

June 27, 2009: The Society of Kentucky Lepidopterists (SKL) Annual 4th of July Oldham County Butterfly Count @ Horner Wildlife Sanctuary. For details see the SKL website at <http://bioweb.wku.edu/faculty/Marcus/KYLeps.html> or contact trip Leader Charlie Covell via email at covell@louisville.edu.

August 12-16, 2009: In the Footsteps of Lucy Braun @ Pine Mountain Settlement School, 36 Highway 510, Pine Mountain, KY 40810. This four-day forest study workshop is named in honor of one of the first and foremost conservationists of the 20th century, E. Lucy Braun. Dr. Lucy, as she was called by her colleagues, devoted her life to the study of plants and to conservation campaigns to save wilderness areas and other natural sites. The four-day workshop will combine field trips, lectures, and slide presentations in the study of forest types found in Eastern Kentucky. Daily field trips will include four- to eight-mile hikes. The workshop is geared toward adults. Fee based. Contact the Pine Mountain Settlement School at 606-558-3571 or 606-558-3542 for details. You can also visit their website at <http://www.pinemountainsettlementschool.com/>.

August 28-30 or September 12-14, 2009: The Society of Kentucky Lepidopterists (SKL) Summer Field Trip @ Jackson Purchase (Western Kentucky). For details see the SKL website at <http://bioweb.wku.edu/faculty/Marcus/KYLeps.html> or contact trip leader: [Gerald Burnett gdburnett@brtc.net](mailto:Gerald.Burnett@gdburnett@brtc.net).

September 12 & 19, 2009: Monarch Butterfly Migration Mysteries @ Audubon Museum, John James Audubon State Park, 3100 US 41 North, Henderson, KY 42420 (8:00 a.m. and 1:00 p.m. - both days). Bid a farewell to the Monarch Butterflies migrating south for the winter. We will meet at the Audubon Museum for a 45-minute introductory indoor presentation. Next, we will carpool to the Sloughs Wildlife Management Area for some outdoor Monarch tagging. The outdoor portion (2-3 hours) is weather dependent. Please dress for potentially marshy conditions. We will meet at the Audubon Museum for an introduction into these extraordinary insects and carpool to the Sloughs Wildlife Management Area to capture and tag them on their way to Mexico. Tags and nets will be provided. Contact Julie McDonald at (270) 826-2247 or by email at juliea.mcdonald@ky.gov, or visit the park website at <http://parks.ky.gov/findparks/recparks/au/> for more. Program Fee: \$5.00 per person, Family rate (up to five members, extra members \$2.50 each) - \$13.00; FOA Members - \$4.00 per person

September 17-20, 2009: Midwest Birding Symposium @ Lakeside, OH. This event is hosted by [Bird Watcher's Digest](#), [The Ohio Ornithological Society](#), and the [Lakeside Association](#). For more information see their website at <http://www.midwestbirding.org> or call (888) 896-6927.

September 18-19, 2009: Kentucky Association for Environmental Education (KAEE) Annual Meeting @ General Butler State Resort Park, 1608 Us Highway 227, Carrollton, KY 41008. The confluence of the Kentucky and Ohio Rivers provides opportunities to figuratively and literally explore this year's theme, Currents in Environmental Education. For more information, contact Jennifer Adler by phone at (859) 707-7421, or visit the KAEE website at <http://kentuckyassociationforenvironmentaleducation.org>.

September 25-27, 2009: Kentucky Ornithological Society's Fall Meeting @ Lake Barkley State Resort Park. For more information contact KOS at P.O. Box 463, Burlington, KY 41005 or via their website at <http://www.biology.eku.edu/kos/default.htm>.

October 16-18, 2009: Fall Color Weekend @ Pine Mountain Settlement School, 36 Highway 510, Pine Mountain, KY 40810. Fall Color Weekend at Pine Mountain Settlement School offers activities for people of all ages. Features include hikes, multi-media presentations, and the opportunity to enjoy some of Kentucky's most beautiful natural areas and stunning autumn foliage. Fee based. Contact the Pine Mountain Settlement School at 606-558-3571 or 606-558-3542 for details. You can also visit their website at <http://www.pinemountainsettlementschool.com/>.

October 18, 2009: 12th Annual Indiana Bluebird Society Meeting @ Quaker Haven Camp, 111 Ems D16c Lane, Syracuse, IN. There will be two featured speakers, Jerry Sweeten, Director of Environmental Studies at Manchester College and Dena Purcell with Wild Birds Unlimited in Fort Wayne, Indiana. Jerry will be speaking about birds native to Indiana and demonstrating the use of mist-netting to show how birds are captured to study and band. Dena will be presenting a program on the basic needs of birds and how to make your garden and yard more enticing to birds. In addition, there will be a panel discussion and question & answer session concerning bluebirds with time to hear from district coordinators with news from their districts. For more information, see the IBS website at <http://indianabluebirdsociety.org/> or contact Ted Vesa by phone at 260-248-8636 or via email at tjvesa@embarqmail.com.

November 7, 2009: Fall Foliage Fiesta @ Audubon Museum, John James Audubon State Park, 3100 US 41 North, Henderson, KY 42420 (1:00 p.m. – 2:00 p.m.). How does nature transition from sunny, warm summer days to crisp and wintry conditions? During this PowerPoint presentation, visitors will peek inside nature's bag of seasonal tricks that allow for life to exist in seemingly unbearable conditions. Afterwards, take a walk outside and soak in the colors and sounds of Audubon State Park's most colorful season. Contact Julie McDonald at (270) 826-2247 or by email at juliea.mcdonald@ky.gov, or visit the park website at <http://parks.ky.gov/findparks/recparks/au/> for more.

October 8-11, 2009: Kentucky Society of Natural History 2009 Fall Meeting @ Reelfoot Lake. See upcoming newsletter for details or go to the website at <http://www.ksnh.org>.

Fall 2009: The Society of Kentucky Lepidopterists (SKL) 2009 Annual Meeting @ Entomology Department, University of Kentucky, Lexington, Kentucky. For details see the SKL website at <http://bioweb.wku.edu/faculty/Marcus/KYLeps.html>.

2010:

April 23-25, 2010: Kentucky Ornithological Society's Fall Meeting. Jenny Wiley State Resort Park. For more information contact the Kentucky Ornithological Society at P.O. Box 463, Burlington, KY 41005, or via their website at <http://www.biology.eku.edu/kos/default.htm>.

Spring 2010 TBA: Kentucky Society of Natural History 2010 Spring Meeting @ Shawnee State Park, Ohio. See upcoming newsletter for details or go to the website at <http://www.ksnh.org>.

Fall 2010: Kentucky Ornithological Society's Fall Meeting @ Paducah/Ballard Wildlife Management Area (dates to be announced). For more information contact KOS at P.O. Box 463, Burlington, KY 41005 or via their website at <http://www.biology.eku.edu/kos/default.htm>.

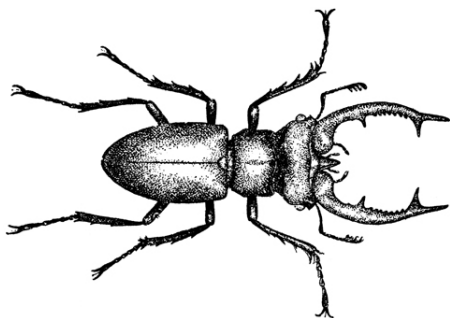
Fall 2010 TBA: Kentucky Society of Natural History 2010 Fall Meeting @ Shakertown National Historic Landmark. See upcoming newsletter for details or go to the website at <http://www.ksnh.org>.

2011:

April 15-17, 2011: Kentucky Society of Natural History 2009 Spring Meeting @ Carter Caves State Resort Park, 344 Caveland Dr, Olive Hill, KY 41164, [(606) 286-4411]. See upcoming newsletter for details or go to the website at <http://www.ksnh.org>.

April 29-May 1, 2011: Kentucky Ornithological Society (KOS) Annual Spring Meeting @ Barren River State Resort Park. For more information contact KOS at P.O. Box 463, Burlington, KY 41005 or via their website at <http://www.biology.eku.edu/kos/default.htm>.

Fall 2011 TBA: Kentucky Society of Natural History 2011 Fall Meeting @ Cumberland Falls State Resort Park. See upcoming newsletter for details or go to the website at <http://www.ksnh.org>.



"The males have mandibles almost as long as itself, and branched like antlers." - John B. Smith discusses the giant stag beetle, *Lucanus elaphus* Fabricius, 1775 in:

Smith, John B. 1896. Economic Entomology for the Farmer and Fruit Grower, and for Use as a Textbook in Agricultural Schools and Colleges. Philadelphia and London: J.B. Lippincott Co. 481 pages.

The mission of the Kentucky Society of Natural History is to actively promote study and interest in Kentucky's rich natural heritage throughout the Commonwealth. Members are typically interested in a broad spectrum of natural sciences and related fields. Among the more prominent activities of the society, are the annual Spring and Fall Conferences, selection of a "Naturalist of the Year", nature photography contests, and a variety of knowledgeable speakers and field trips. We invite anyone who shares our interests to join us. For membership information or the address of the nearest affiliated chapter, please contact:

KSNH, P.O. Box 72777, Louisville, KY 40272-0777, or visit our website <<http://www.ksnh.org>> for the membership form. Membership dues are: Individual \$15, Family \$25, Full Time Student \$5, Life: \$300.

The Kentucky Society of Natural History is an official 501(c) (3) tax-exempt nonprofit organization which was formed in 1939, and incorporated in 1943 in Louisville, Kentucky. All contributions to THE KENTUCKY SOCIETY OF NATURAL HISTORY are tax-deductible to the full extent of income tax laws.

Published quarterly, The Kentucky Naturalist News is the official newsletter of KSNH. Unsolicited contributions are encouraged. Please send articles to: **Barry Nichols, KNN Editor, P. O. Box 21182, Louisville, KY 40221.** You can also email newsletter submissions by sending them to kyfauna@iglou.com.

Kentucky Naturalist News Deadlines:

| <u>Issue</u> | <u>Deadline</u> | <u>Newsletter to be Published</u> |
|--------------|-------------------|-----------------------------------|
| Spring Issue | February 15, 2009 | March 7, 2009 |
| Summer Issue | May 1, 2009 | June 1, 2009 |
| Fall Issue | August 1, 2009 | September 1, 2009 |
| Winter Issue | November 1, 2009 | December 1, 2009 |

For submissions, please cite references. To assist, you may use: <http://www.lib.ncsu.edu/lobo2/citationbuilder/citationbuilder.php>.



**Kentucky Society of Natural History,
P.O. Box 72777,
Louisville, Kentucky 40272-0777.**